

**VIVE**  
COMFORT  
Operation Manual

**VIVE**  
COMFORT  
Operation Manual

# VIVE TP-N-771

COMFORT

P.O. Box 3377  
Springfield, MO 65808-3377  
Toll Free : 888-776-1427  
Web: [www.vivecomfort.com](http://www.vivecomfort.com)  
Hours of Operation: M-F 9AM - 6PM Eastern

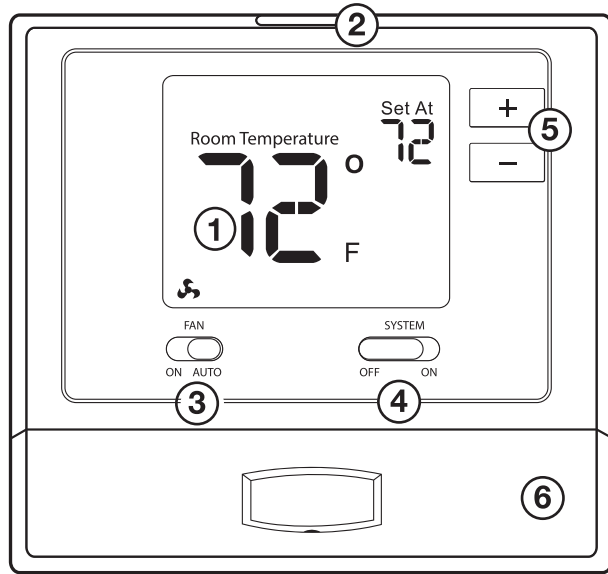
Table of Contents	Page
Table of Contents	1
Thermostat Operation	2-3
Thermostat Quick Reference	4-6
Thermostat Warranty Information	7

Una version en español de este manual se puede descargar en la pagina web de la compañía.



## Caution

Equipment damage hazard. Do not operate the cooling system if the outdoor temperature is below 50 °F (10 °C) to prevent possible compressor damage.



① LCD Display

② Glow in the dark light button

③ Fan Switch

④ System Switch

⑤ Temperature Setpoint Buttons

⑥ Easy change battery door

## ① LCD Display

See page 6 for details about this display read out.

## ② Glow in the dark light button

The glow in the dark light button will self illuminate for several hours after exposure to ambient light. This button turns on the display light when pressed.

## ③ Fan Switch

Select **ON** or **AUTO**. **ON** will run the fan continuously. **AUTO** will cycle the fan on only when the heating or cooling system is on.

## ④ System Switch

Selects the operation mode of your HVAC system. Selecting **ON** turns on either the heating or cooling. Selecting **OFF** turns off heating or cooling. Your thermostat is configured for either heat or cool.

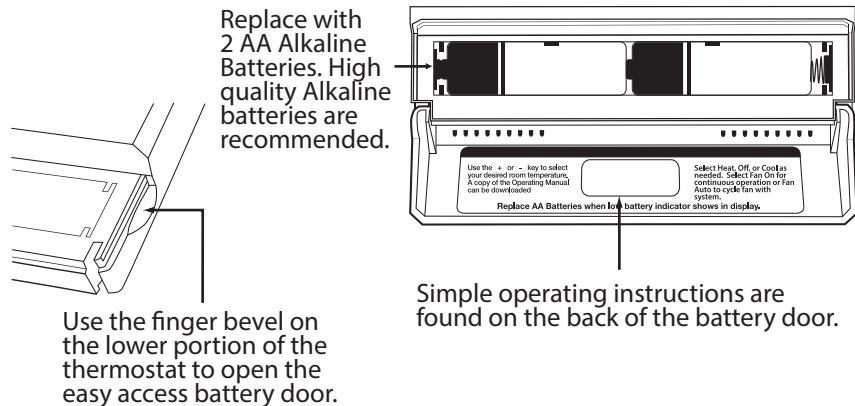
## ⑤ Temperature Setpoint Buttons

Press the + or - buttons to select the desired room temperature.

## ⑥ Easy Change Battery Door

See page 4 for details.

## Battery Door Information

**Caution:**

When the battery icon **LOW** appears replace your AA batteries immediately. Failure to do so may result in your heating & cooling system becoming inoperable. Freezing or overheating can occur.

**Important:**

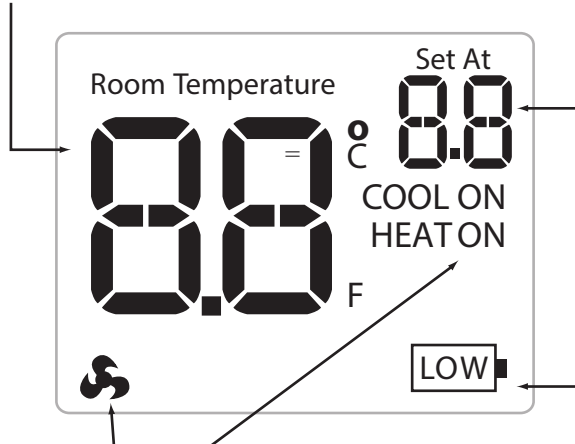
The low battery icon is displayed when the AA battery power is low. Whenever the thermostat detects low battery voltage from the AA batteries, the low battery icon will begin flashing on the screen for 21 days (if the batteries are not changed). If the batteries are not changed 22 days after the thermostat detects low battery voltage, the thermostat screen will only show the flashing battery icon until buttons are pressed. If the batteries are not changed 43 days after the thermostat detects low battery voltage, the thermostat screen will only show the flashing battery icon until buttons are pressed and the set points will offset to 85°F/29°C in cooling and 55°F/13°C in heating. At this stage, set point changes can be made temporarily but, the set points will change back to defaulted values after a 4-hour period. The thermostat will continue to perform this low battery flashing, temperature offset condition until the internal voltage threshold is reached. When the thermostat internal voltage threshold is reached, all relays will be opened and the thermostat will become inoperable until new batteries are installed.

### Room Temperature:

Indicates the current room temperature.

### Setpoint Temperature:

Displays the selected setpoint temperature.



### System Operation Indicators:

The COOL ON, HEAT ON or fan icon will display when the COOL, HEAT or fan is on.

**NOTE:** The compressor delay feature is active if these icons are flashing. The compressor will not turn on until the 5 minute delay has elapsed.

### Low Battery Indicator:

Replace batteries when indicator is shown.

## Warranty Registration

Your new thermostat has a 5 year limited warranty. You must register your thermostat within 60 days of installation. Without this registration the warranty period will begin on date of manufacture. For warranty issues please contact the HVAC professional that installed this product. You can register your new thermostat in 2 ways:

### Online

Go to the company website, select warranty registration and fill out a short registration form.

### Mail

Complete the form below and mail it to the address shown.

## Warranty Registration

Name: \_\_\_\_\_ Thermostat Model: \_\_\_\_\_

Address: \_\_\_\_\_ Date Installed: \_\_\_\_\_

City: \_\_\_\_\_ Complete form and mail to:

State: \_\_\_\_\_ **Thermostat Warranty Registration**

Zip: \_\_\_\_\_ Vive Comfort

P.O. Box 3377  
Springfield, MO 65808-3377

**Cut Out For  
Warranty Registration**



**VIVE**  
COMFORT  
[www.vivecomfort.com](http://www.vivecomfort.com)